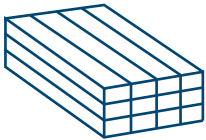


Storage & Handling of Boxspan Beams

STORAGE BEFORE INSTALLATION



Boxspan[®] steel beams stacked together in wet conditions can cause a chemical reaction between adjacent beams. What can result is early oxidation of the zinc coating giving a white appearance and a rough texture.

To maintain the zinc coating, packs of beams should be stacked clear of the ground and, if wet, separated and dried.

If beams are not required for immediate use, protect them with waterproof covers.

HANDLING PRODUCTS ON SITE

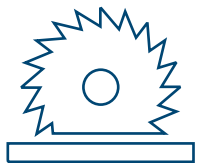


Handling Safety – Boxspan[®] steel beams and components may have sharp edges and can be heavy. It is recommended that cut-resistant gloves and appropriate manual handling techniques are employed.

Handle materials carefully to avoid damage. The zinc coating on the beams is important. Dragging beams across rough surfaces such as the ground, brick walls or concrete will damage the coating.

CUTTING & DRILLING

Personal Protective Equipment (PPE) for eyes ears and hands should always be utilized. Where possible, you should minimise site-work by using product cut to length in the factory.

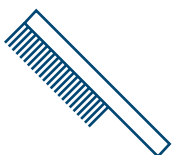


For cutting beams on site, we recommend the use of a Makita “C-Saw” which is a cold cutting circular saw. The saw creates cool metal chips (collected in a catcher) rather than the hot particles produced by abrasive saws using a carborundum disk. Also, the cut is cleaner and leaves less resultant burr and swarf.

Angle grinders are not recommended as they often provide a poor cut and are less safe to operate than circular or drop saws.

All cutting and drilling should be carried out away from the installation point on individual beams where the swarf can be easily removed. Particular care must be taken with timber products (i.e. windows) that are to be stained. Swarf has metal particles that, if allowed to get onto timber products may lead to black spots.

CLEAN UP



Swarf (metal and/or abrasive disk residue) resulting from cutting and drilling) left on the surfaces of materials will cause rust stains and can lead to reduced life of the material.

Sweep or wipe off all swarf and other debris from the products at the completion of the installation.